

Sissinghurst Castle
A celebrated Garden created by Vita Sackville-West and Harold Nicholson, romantic in style and unique in atmosphere.
Visit our shop and restaurant and enjoy walks around the estate.
Open March - October (see website for details), 10.30am - 5pm, Mon, Tues, Fri, Sat, Sun, closed Weds/Thurs.
www.nationaltrust.org.uk/sissinghurst
Call for info 01580 710700
email: sissinghurstcastlegarden@nationaltrust.org.uk

CRANBROOK UNION WINDMILL
A fine working Smock Mill & one of the tallest in the country. Built in 1814 & still grinding corn today for demonstration.
Admission: **FREE** - donations welcome
Open: From 2.30pm - 5pm, Saturdays and bank holidays from Easter to beginning of April whichever is sooner to end of September. Sundays from mid July to end of August.
The Hill, Cranbrook
Groups: 01580 713969
www.unionmill.org.uk

bedgebury
adventure in a world of trees
If you enjoy...
adventure play, beautiful trees, family cycling, mountain biking, country walking and horse riding, then Bedgebury National Pinetum and Forest in the High Weald of Kent is the place to visit.
Come and create your own adventure in a world of trees.
Open all year
Signposted from the A21 between Lamberhurst and Filmwell, 10 miles from Tunbridge Wells and 12 miles from Hastings.
Telephone: 01580 879820 www.forestry.gov.uk/bedgebury

The Kent High Weald Partnership operates throughout the Tunbridge Wells Borough, our aim is to 'link the local community and the countryside, by raising awareness and encouraging action' We work with individuals, community groups, schools, youth groups, landowners, local businesses and parish, borough and county councils.
We run free public countryside events, activities and practical conservation tasks throughout the year. We manage 4 nature reserves including the Crane Valley Local Nature Reserve. We have produced walk and cycle guides for the area which are available to download from our website www.khwp.org.uk
For more info you can contact us via e-mail at info@khwp.org.uk or call 01580 212972



Cranbrook Museum
Exciting displays exploring Cranbrook's former industry, agriculture and trades. Past social life of town and district in all its variety. Archives for family research.
Open 2.00pm - 4.30pm, Tuesday to Saturday and Summer Bank Holidays, April to October.
Cranbrook Museum, Carriers Road, Cranbrook, Kent TN17 3JX
Telephone: 01580-712475
Email: roddann12@btconnect.com

Kent & Sussex Holiday Cottages
Self-catering properties in Kent & Sussex
Call 01580 720770
www.kentandsussexcottages.co.uk

WEALD INFORMATION CENTRE
Local places to visit, eat and stay
Local accommodation booking service
Circular walks in High Weald Countryside
Bus and train timetables
Theatre tickets
Open: Monday - Friday 9.00am - 5.00pm
The Old Fire Station Stone Street, Cranbrook Kent, TN17 3HF
Tel: 01892 554291
www.visit-cranbrook.co.uk



Visit other places in the area

Historic Houses and Gardens
Bateman's Burwash (01435 882302)
Rudyard Kipling's home (National Trust)
Pashley Manor Gardens Ticehurst (01580 200888)
A quintessential English Country Garden
Museums
Woodchurch Windmill & Museum Woodchurch, Ashford (01233 860649)
Tenterden Museum Station Road, Tenterden (01580 764310)
Smallhythe Place Smallhythe, Tenterden (01580 762334)
Ellen Terry's home and Barn Theatre (National Trust)
Churches
All Saints Church Tudeley (01732 808277)
Stained glass windows by Marc Chagall
St Mildred's Tenterden. Lord Nelson and Emma Hamilton's daughter Horatia was married to Philip Ward the Vicar of St Mildred's and lived here from 1830 to 1859
Christ Church Kildown (01892 890244)
Spectacular Gothic revival interior
Family Fun
The Rare Breeds Centre Woodchurch (01233 861493)
Animal action and woodland adventures
Sports
Tenterden Leisure Centre Recreation Ground Road, Tenterden
Swimming, tennis, squash & gym
London Beach Golf Club Tenterden (01580 766279)
Vineyards
Chapel Down Winery Smallhythe, Tenterden (01580 766111)
Farmers' Markets
Tenterden Recreation Ground Road (01580 765111)
Every 2nd Saturday 9.30am - 1pm
Seven Wonders of the Weald
Royal Tunbridge Wells, Hole Park, Scotney Castle, Chiddingstone Castle, Kent & East Sussex Railway, Knole, Biddenden Vineyards
www.sevenwonders.org.uk

Visit Cranbrook

The picturesque buildings of this attractive town feature in many of the works of art produced by a group of Victorian artists known as the Cranbrook Colony. The railway put Cranbrook in easy reach of London and the Royal Academy where rich industrialists were inclined to snap up paintings and prints depicting romanticised scenes of rural life. Cranbrook remains unspoilt today and continues to inspire artists in all media. 'Art in Store: Cranbrook Making an Exhibition of Itself' is an annual celebration of contemporary talent when local artists display their work in shop windows around the town.
Activities
Weald Sports Centre Angley Road (01580 710720)
Swimming pool, tennis courts, gym and other sports facilities.
Hartley Lands Farm Swattenden lane (01580 720319)
Coarse fishing in well-stocked lakes & ponds
Places to Visit
Cranbrook Museum (01580 712475) the history of Cranbrook brought to life
Union Windmill (01580 712256) a fine example of a working mill
St Dunstan's Church Impressively large Church known as "the Cathedral of the Weald"
Golford Chapel Striking contemporary stained glass windows depicting the four seasons in the Weald

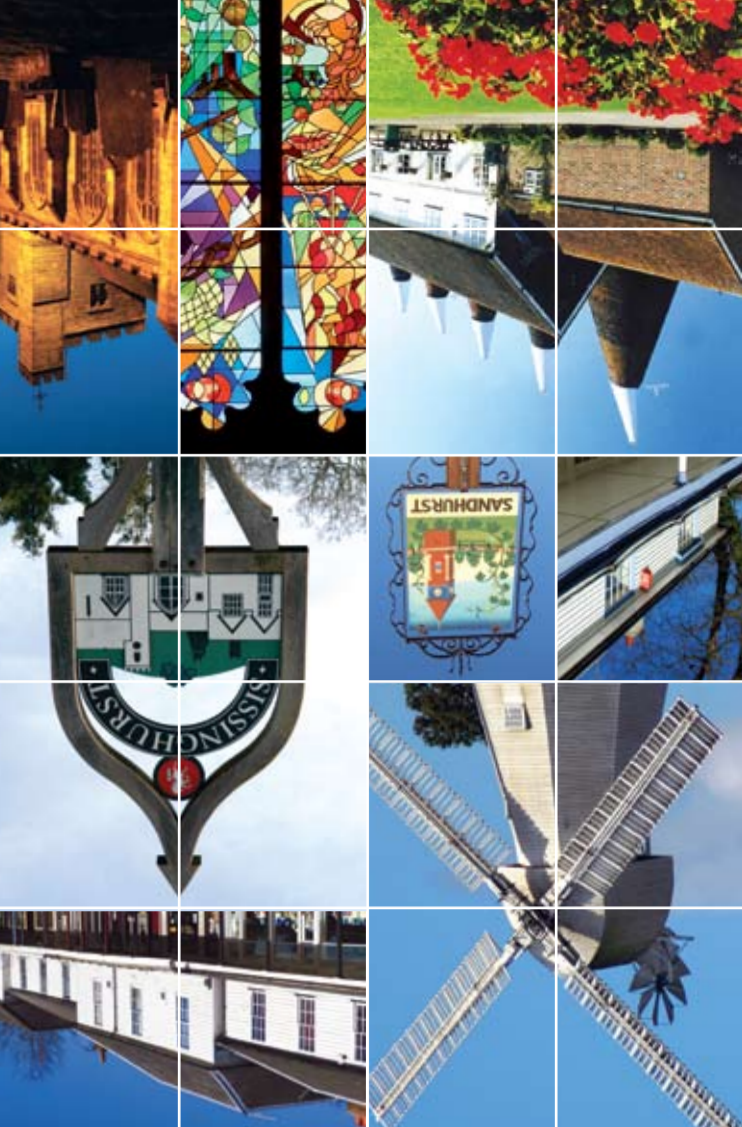
Cranbrook is a town within the High Weald Area of Outstanding Natural Beauty (AONB), more information available at www.highweald.org

Visit Goudhurst

The 17th Century St Mary's Church dominates the summit of the village while the pretty weatherboard and tile hung houses on the High Street appear to tumble down a steep hill. The views of the surrounding countryside are breathtaking. The Church tower was used as a Home Guard observation post during the Second World War. It is said that 51 Churches can be seen from the tower. In its long and colourful history Goudhurst has been variously an iron foundry, a home of Flemish weavers and a smugglers' lair. It was in Goudhurst that the 'Hawkhurst Gang' were finally overpowered by a local band of militia. This delightful village with its charming duck pond has some surprises in store for keen shoppers. Goudhurst attracted worldwide attention in July 2007 when the Tour de France tackled its challenging hill en route from London to Canterbury.
Places to Visit
Bedgebury National Pinetum & Forest (01580 879820). The largest collection of conifers on one site in the world features the tallest tree in Kent. Walking and cycling trails and a splendid themed adventure playground. 'Go Ape' in the tree tops. www.forestry.gov.uk/bedgebury
Scotney Castle Imposing Victorian House with views over fairytale castle ruins and gorgeous gardens. (National Trust)
Nearby Attractions
Marle Place Gardens and Gallery a spectacular blend of art and nature.
Bayham Abbey fascinating English Heritage site.

Visit Sissinghurst

Sissinghurst is world famous thanks to the Garden and Estate which attract hundreds of thousands of visitors every year. The pretty main Street of mainly weatherboard cottages is flanked by Trinity Church, a pub, and a few shops and restaurants. Just outside the village is the famous **Sissinghurst Castle** (01580 710701)
Little but the walls remain of the grand manor house that stood here in Tudor times. Queen Elizabeth 1st stayed in at Sissinghurst Castle in August 1573 and Knighted her host, Thomas Sackville. Its colourful history included a period as a prison for French captives of the Seven Years War (during which time the House acquired the name "Castle"), as well as a Poor House in the 19th Century. It was little more than a ruin when the diplomat and diarist Harold Nicolson and his wife, novelist and poet, Vita Sackville-West bought it in 1930. Together they restored the buildings and planned and planted the magnificent gardens. Vita's writing room, preserved as it was, overlooks the grounds from the romantic rosy bricked tower. The series of individual and original gardens provide a living memorial to the vision and devotion of the Nicolsons. There is much to delight gardeners, historians and book-lovers in this fascinating spot.
Food & Drink
Biddenden Vineyard & Cider Works (01580 291726)
Sports
Cackle Hill Lakes, Biddenden - coarse fishing (01580 291954)
Chart Hills Golf Club, Biddenden (01580 292222)



Charming villages in the Weald of Kent

Visit Cranbrook & Beyond 2011/12



Cranbrook Getting here & around



Visit Benenden

A traditional village green is the focal point of this attractive village. Dominated by the handsome St George's Church and bordered by charming cottages including the tile-hung school founded by Edmund Gibbon in 1609, and the ornate Victorian Village School and Hall.
The Earl of Cranbrook's fondness for the Gothic revival style can be seen in his Victorian stately home called Hemsted which he built on the site of a Tudor manor house. Queen Elizabeth stayed there during her Royal progress of the county in 1573 and an eighteenth century chatelaine of the house was Kitty Fisher remembered in the Nursery Rhyme "Lucy Locket lost her pocket, Kitty Fisher found it..." Kitty is buried in her ball gown at Benenden Church. Hemsted is now Benenden School, whose most famous old girl is Princess Anne.
The new Village Hall hosts all sorts of entertainments including antique, craft and gift fairs as well as productions by the Benenden Players.
Activities
Hemsted Forest Golf Club (712833) Golford Road, 18 holes
Hempstead Equestrian Centre Golford Rd (240086) Horse riding
Places to Visit
Hole Park Gardens (01580 241251) on the road to Rolvenden. Open since 1927, Hole Park boasts a formally laid out garden including a magnificent collection of rhododendrons and azaleas. Wilder tracts of woodland feature acres of bluebells in Spring and wonderful colours in autumn.
Nearby Attractions
Rolvenden Farmers Market St Mary's Church and Village Hall (01797 252248), Thursdays 10am - 12noon

Visit Hawkhurst

Hawkhurst is really two villages in one, with a tranquil settlement on the Moor and a thriving commercial centre at Highgate. A pretty colonnade of shops is a particular feature of the Main Street. St Laurence's Church is situated on the Moor just to the South, mainly built in the 14th and 15th Centuries it contains some exceptional stained glass windows, sadly damaged in the war, including a memorial to Sir John Herschel, the astronomer who lived at Collingwood House on the Moor. The notorious 'Hawkhurst Gang' of smugglers who ruthlessly terrorised the neighbourhood in the middle of the 18th century frequented many of these establishments on their way to Rye and the Romney Marsh.
Activities
Hawkhurst Fish Farm Old Hastings Road (01580 753813) Carp and trout fishing in a lake
Hawkhurst Golf Club (01580 754074) High Street, 9 holes and a squash club
Kino Cinema Victoria Hall Rye Road (01580 754321) Independent, luxurious cinema
Nearby Attractions
Bowl Water Lamberhurst (01892 890661) The South East's largest lake affords excellent opportunities for walking, cycling, boating, fishing.

Visit Frittenden

Frittenden is small and quiet surrounded by farmland with fields full of sheep. The Church of St Mary was built in the 1840's on the site of and in the style of an earlier medieval Church. There are many handsome houses in and around the village from all architectural periods.
Frittenden became famous in the 1930's for its fabled Treacle Mines when scores of visitors were led to believe that Frittenden was the world centre of Treacle Production.
Nearby Attractions
Idea Croft Herb Garden Staplehurst (01580 891432) Walled garden with fragrant herbs.
Lashenden Air Warfare Museum
Headcorn Aerodrome (01622 890226) Situated in WW2 airfield. Aviation museum highlighting warfare and weaponry. Open Sundays and Bank Holidays only.

Visit Sandhurst

St Nicholas Church was completed by the mid 14th century when, according to local tradition, the churchyard became a bit too full of the victims of Black Death for the comfort of the surviving villagers who decamped to a healthier site. It is certainly a plausible explanation for the Church being so far removed from the main part of the village.
The Church overlooks Bodiam Castle and Kent Ditch, a natural feature improved by man, which separates Kent from Sussex.
Places to Visit
Sandhurst Vineyard Hoads Farm, Crouch Lane (01580 850296) Family run farm growing hops, vines, cherries, plums and sheep.
Nearby Attractions
Bodiam Castle (01580 830436) Imposing 14th century moated castle owned by The National Trust
Great Dixer Northiam (01797 252878) A 15th Century Hall House extended by Sir Edwin Lutvans and set in innovative gardens. **The Bodiam Ferry Company** Rye Road, Newenden (01797 253838) Boat trips on the River Rother to Bodiam Castle. **Kent & East Sussex Railway** stations at Rolvenden and Newenden (087 060 060 74) Nostalgic steam train rides between Tenterden and Bodiam

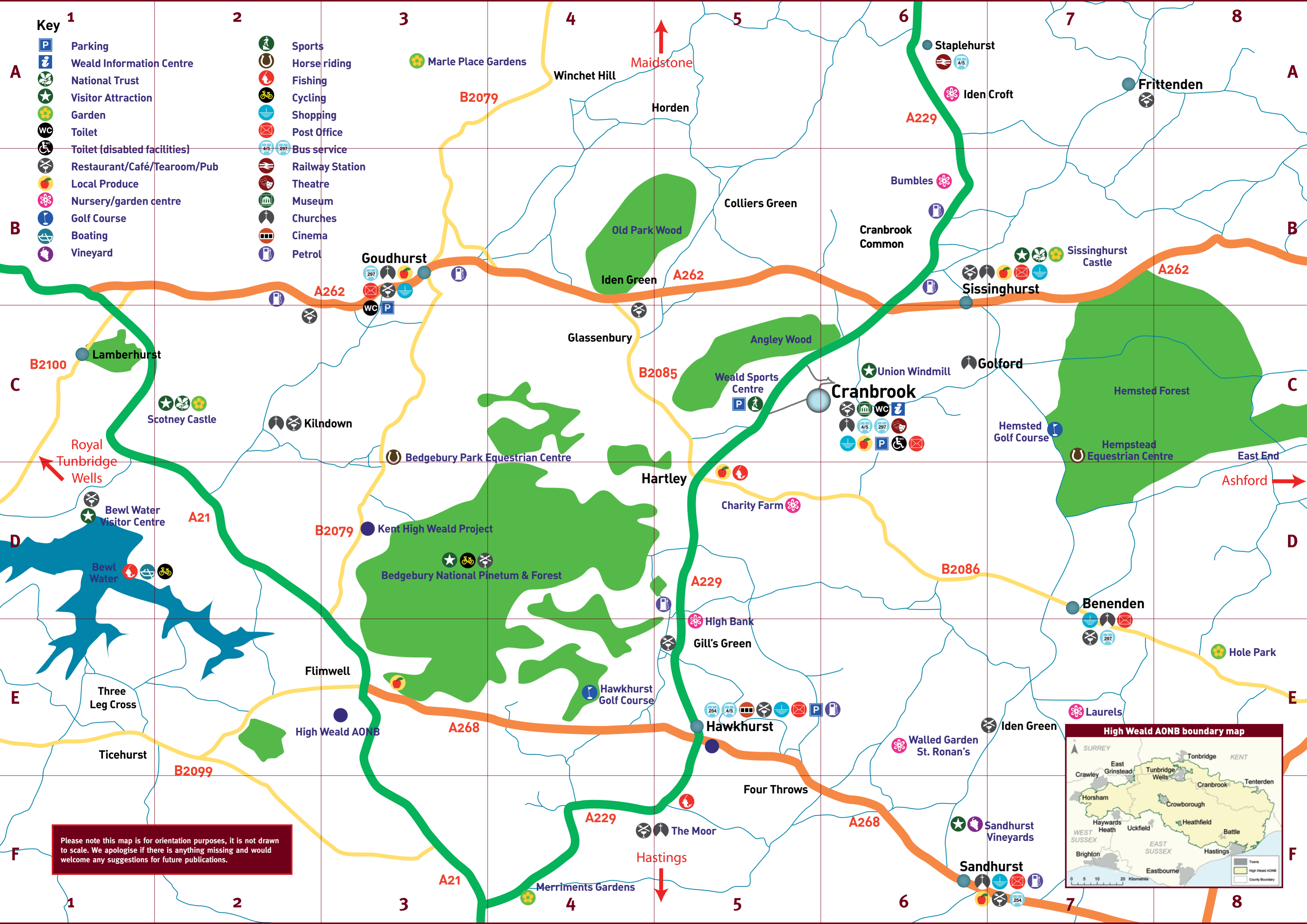
Kent is known as The Garden of England renowned for its hops, cherries, apples and sheep. A beguiling mix of gentle hills, wooded escarpments, orchards and hop gardens creates some spectacular scenery. The splendour of the landscape is officially acknowledged by its status as an Area of Outstanding Natural Beauty. Many of the shops, restaurants, cafes and pubs mentioned here pride themselves on serving or selling locally produced food and drink. The annual Cranbrook Apple Fayre at the end of October is a fun celebration of the English Apple featuring an apple crushing machine to press your own apple juice, folk song group, Morris dancers, old tractors, ciders and apple juices from local producers.

Getting Here
Railway station: Staplehurst **Buses:** 297 Tunbridge Wells to Ashford, 4 & 5 Maidstone to Hastings **Car:** Midway between A21 (London - Hastings) and M20 (London - Folkestone) with connections to M25
Where to Stay Accredited accommodation in Hotels, Inns, Guest Houses, Bed & Breakfast, Campsites and Self-Catering Cottages can be booked at:
Weald Information Centre
The Old Fire Station, Stone Street, Cranbrook TN17 3HF
01892 554291
www.visit-cranbrook.co.uk
Converted farm buildings, quaint cottages and oast houses are amongst the choices available to rent through: **Freedom Kent & Sussex Holiday Cottages**
15 High Street, Cranbrook TN17 3EB
01580 720770
info@kentandsussexcottages.co.uk
www.kentandsussexcottages.co.uk
Getting Around Cranbrook is easy to see on foot. There are regular bus services from Maidstone, Hastings, Tunbridge Wells and Ashford all with stops in the surrounding villages. Those travelling by car will find plenty of **FREE** parking in 3 centrally located car parks. Parking on the High Street is restricted to one hour and strictly forbidden on double yellow lines. There are many footpaths, cycle routes and bridle paths in the area.



- Key 1**
- Parking
 - Weald Information Centre
 - National Trust
 - Visitor Attraction
 - Garden
 - Toilet
 - Toilet (disabled facilities)
 - Restaurant/Café/Tearoom/Pub
 - Local Produce
 - Nursery/garden centre
 - Golf Course
 - Boating
 - Vineyard

- Sports
- Horse riding
- Fishing
- Cycling
- Shopping
- Post Office
- Bus service
- Railway Station
- Theatre
- Museum
- Churches
- Cinema
- Petrol



Please note this map is for orientation purposes, it is not drawn to scale. We apologise if there is anything missing and would welcome any suggestions for future publications.

